

Solution: K2 – KeyAuditor & KeyServer

Company: Sassafras Software Inc. – <http://www.sassafras.com>

For additional information, contact:
John Tomeny, Director of Marketing
Sassafras Software Inc.

Company:

Sassafras Software has a reputation as an early pioneer in the development of software license compliance technology for desktop computers. They have been providing IT asset management solutions since their first public release of KeyServer in 1990. Sassafras enjoys broad support from software publishers, including many technical partners that rely exclusively on KeyServer technology. For nearly 17 years, their products have supported Software Asset Management (SAM) activities on some of the largest computer networks worldwide.

Web site: <http://www.sassafras.com>

Technical support is free at: 603-643-3351 or at: support@sassafras.com

Technical Description:

K2 is an integrated software asset management solution that enables IT managers to automatically audit, manage, and control their software and hardware assets. Sassafras first built KeyServer for Macintosh computing environments in 1989 and extended support to Windows computers in 1995. Presently, Sassafras is shipping a pre-release client agent for Linux.

In addition to comprehensive hardware/software auditing, K2 will also control access to licensed/unlicensed software and run detailed deployment and usage reports for an enterprise-level organization or for specific departments.

KeyAuditor, K2's auditing service, integrates enterprise-wide software and computer hardware audit data with KeyServer's software license management services. The KeyAuditor service will run periodic incremental, or on-demand, audits to automatically keep audit information current for desktop and portable computers using a transparent, incremental, auto-discovery protocol.

KeyServer, K2's software license management service, allows administrators to specify a licensing policy each program or application suite and then track deployment and usage. An enforcement option automatically manages license compliance for each floating license, node locked "per-CPU" license, or custom license policy.

KeyReporter, K2's Web reports server, provides global web-based access to enterprise-level and divisionally-restricted reports. Scheduled or on-demand

reports can be run for software and hardware configuration, IT asset allocation, software usage, and license compliance.

KeyConfigure, K2's cross-platform management console, provides central configuration and full access to internal and web-based reports, as well as extensible reporting with any ODBC-compliant reporting tools. K2 supports Open Directory and third-party authentication servers. PKG and MSI installers work with ARD and other desktop management/deployment tools.

K2 Product Overview:

- Enterprise-wide Software/Hardware Asset Management
- Early pioneer in IT Asset Management: Macintosh since 1989 / Windows since 1995
- Global Enterprise Scalability – 40,000+ client computers supported by a single server process
- Supports both connected and disconnected client computers

Lifecycle Management Tasks:

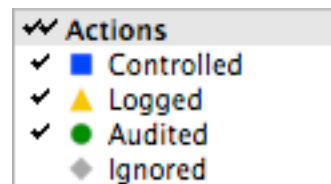
Asset Management

- Complete software inventories: identifies tens-of-thousands of Macintosh and Windows software applications
- Hardware audits: OS details, computer configuration profiles, plus computer asset tag and location data
- Automatic, incremental delta audits and configurable reports
- Web-based and Console-based reporting
- Hundreds of standard built-in lifecycle management reports
- ODBC-compliant customizable external reports
- Report scheduling, Tiger Widget reporting tool, and RSS feeds
- Hosted process on Mac OS X, Windows, Linux, or NetWare

Usage Management

- Support multiple user-groups and divisions of computers

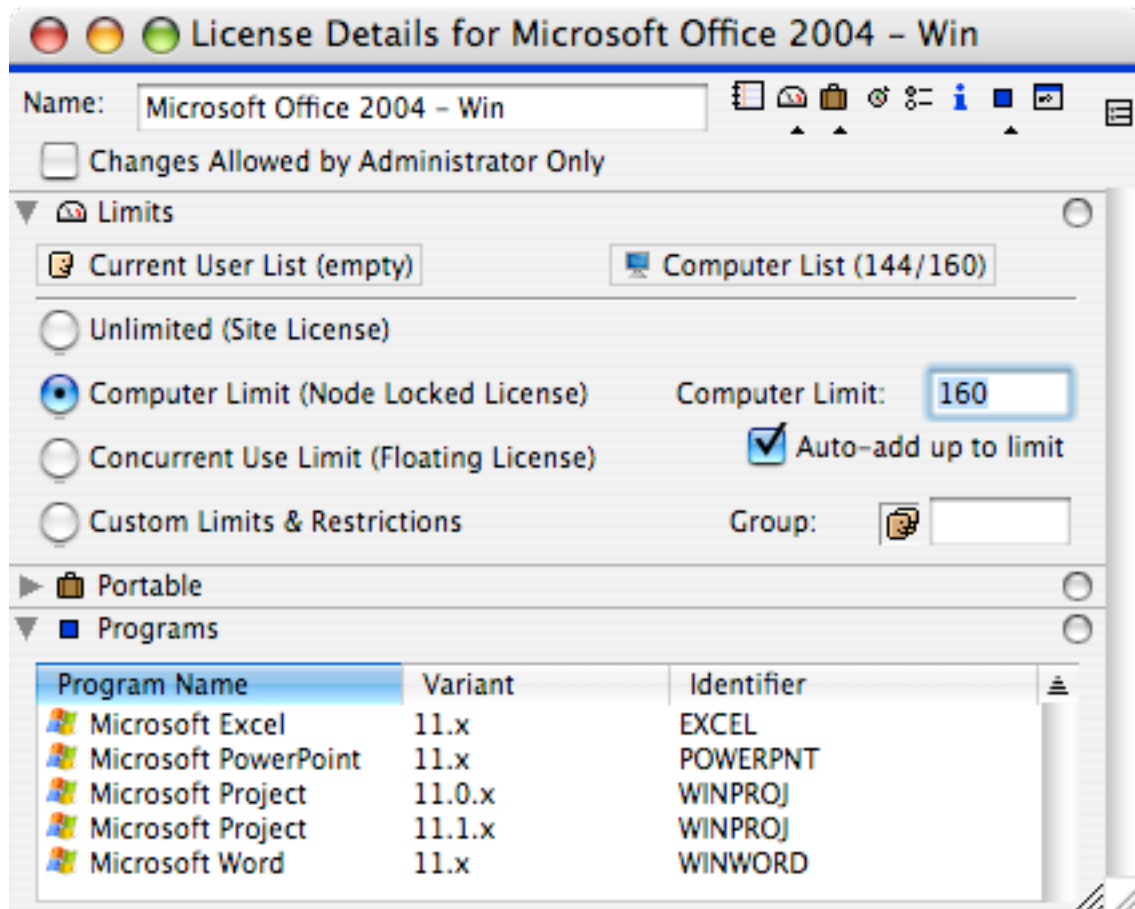
- Settings to control, log, or ignore software usage are configurable for each software application
- Manage, or track usage for, different software versions discretely



- Managed and tracked applications are location independent – can be installed anywhere
- Deny access to unauthorized software or users
- Scheduled usage and reservations
- Software deployment & usage reports

License Management

- Central deployment and management of software licenses
 - Unlimited site licenses
 - Single computer (node-locked) licenses
 - Concurrent use (floating) licenses
 - Custom limits & restrictions
- Multiple license profiles for each program
- Manage separate software versions
- Reclaim and redeploy abandoned software licenses
- Extensive License Compliance analysis & reports



Help Desk Management

- Hardware audits: configuration and IT asset details
- Role- and Scope-based Administration
- Tiger Widget, Web reports & RSS report feeds

Integration with other IT Management Tools

- Supports all major third-party authentication servers
- Extensible reporting functionality with any ODBC-compliant reporting tools
- Completely integrated with upcoming OpenITAM project
see <http://www.openitam.org/>

System requirements:

<http://www.sassafras.com/hrl/6.1/osdetails.html>

KeyServer & KeyReporter

(host for license server or web reporter)

- Win NT, 2000, 2003, or XP
- Mac OS X 10.3 - 10.4
- Novell Netware 4.2 - 6.5
- Linux (or BSD Unix) 2.2 Kernel

KeyConfigure (admin console)

- Win 98, ME, NT, 2000, 2003, XP
- Mac OS X 10.2 - 10.4

KeyAccess (client agent)

- Win 95, 98, ME, NT, 2000, 2003, XP
- WTS: NT 4, 2000, 2003, Citrix
- Mac OS X 10.2 - 10.4 (PPC or Intel)
- Mac OS Classic 8.x - 9.2

Scalability:

K2 can be scaled to support virtually any computing environment as few as 10 client computers to tens-of-thousands of client computers supported by a single server process. Currently, our largest global installations are at the BBC, with 27,500 computers throughout the EU supported by a single KeyServer process in London, and at Tokyo Marine & Insurance, with 24,000 computers supported by a single server process in Tokyo. Apple Computer supports thousands of users with a Cupertino-based KeyServer. Numerous customers manage 10,000+ client computers in multiple cities/countries with a single, hosted process.

Case Study:

Albuquerque Public Schools serves 88,000 students and manages 30,000 computers with an IT staff of 25 technicians. Many of the computers throughout their district are supported by K2 - KeyAuditor & KeyServer. Kennedy Middle School supports 250 computers for 500 students with K2. Computers are distributed for use to classrooms, labs, faculty and administration and supported by one of the school's teachers in his "spare" time.

More requests for software than money:

When the IT staff at Kennedy was faced with a common predicament regarding their school's need for software, they knew exactly how to resolve it. They had more requests for software than money to pay for it all. But they knew that they didn't need as much software as staff and faculty were requesting. So they turned to K2 from Sassafras Software to discover their true needs.

Software Asset Management with K2:

They installed K2 - KeyAuditor & KeyServer to audit and measure their true software needs. Then they deployed copies of each software title to areas of confirmed need and began measuring demand. Some of their software agreements allowed them to temporarily install on more computers than they were licensed for and then "true-up" (reconcile) their licenses with the publisher at a latter date.

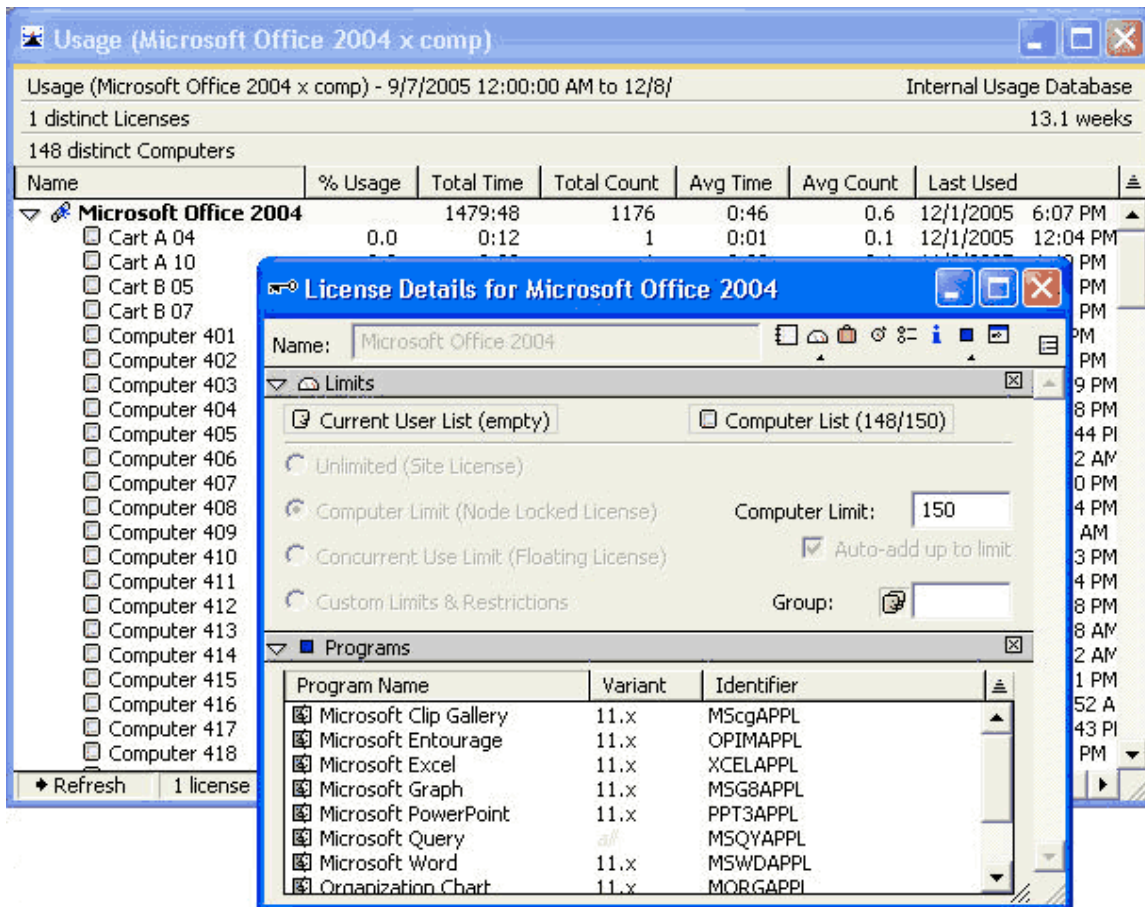
As they identified computers that did not use the software assets deployed to them, they reclaimed those assets and redeployed them to other computers.

Now they know how much software they need:

Kennedy Middle School now provides software to 100% of the true needs in their environment at a cost below their originally limited budget. The ROI on their purchase of K2/KeyServer was achieved within months of product deployment, and they continue to save substantially with each new software title that they bring into compliance with K2.

Microsoft Office 2004 Example

- 250 computers
- Deployment requests 200+
- Only 148 computers touched it over four months
- Purchased 150 licenses
- Set "Node-locked" licensing to "150"
- Savings: \$5,000 (100 licenses x \$50/each)



More than just software management:

Some additional benefits that Kennedy Middle School experienced include efficient management of computing labs and mobile computing carts, launch denial of unauthorized "chat" and messaging software, and availability of student and teacher usage data for help-desk operations.

K2 Product configuration

Four primary components are installed to support the K2 system, all of which take 30 seconds to 2 minutes to install:

- Server process (KeyServer): install on one host computer to provide services to your entire network.
- Client agent (KeyAccess): install on each of the client computers (can be auto-deployed with MSI or PKG installers)
- Administrator's Console (KeyConfigure): install on as many computers as you wish to use to manage configuration
- Web reports server (KeyReporter): optional tool may be installed if you wish to provide access to reports over the web

Technical Support

Technical support is free for the life of the product.