

## SOLUTION BRIEF

Albuquerque Public Schools serves 88,000 students and manages 30,000 computers with an IT staff of 25 technicians. Many of the computers throughout their district are supported by K2 - KeyAuditor & KeyServer. Kennedy Middle School supports 250 computers for 500 students with K2.

### Situation

Software licensing costs and annual maintenance renewals were overrunning their budget. Simply put, they had more requests for software than money to pay for it.

### Solution

Using K2 to observe software usage patterns and measure usage, they were able to identify the computers that actually used software. Then they purchased software based on true requirements rather than perceived needs and saved their school over \$20,000 on just three titles.

They also experience additional savings on other software titles and annual maintenance fees because of K2's accurate reporting and analysis.

### Benefits

Kennedy Middle School now provides software to 100% of their true requirements at a cost below their originally limited budget. The ROI on their K2 purchase was achieved within months of product deployment, and they continue to save substantially with each new software title that they manage with K2.

### Sassafras Software, Inc.

K2 - KeyAuditor & KeyServer is employed at thousands of organizations world-wide to successfully manage their IT requirements.

## SOFTWARE ASSET MANAGEMENT CASE STUDY

# Major School District reduces licensing costs and increases availability of software to educators with K2 – KeyAuditor & KeyServer

### More requests for software than money.

When the IT staff at Kennedy was faced with a common predicament regarding their school's need for software, they knew exactly how to resolve it. They had more requests for software than money to pay for it all. But they knew that they didn't need as much software as staff and faculty were requesting. So they turned to K2 from Sassafras Software to discover their true needs.

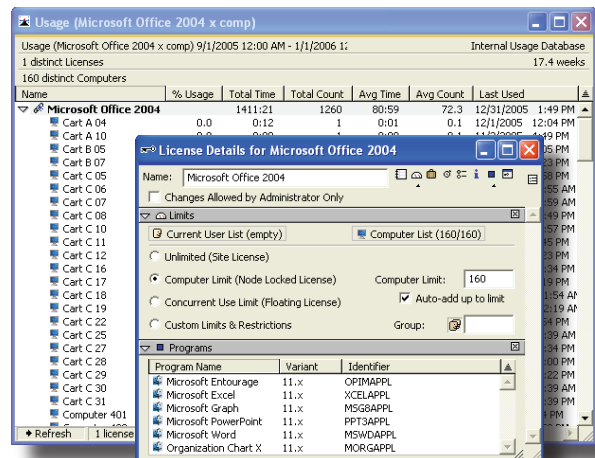
### Software Asset Management with K2.

They installed K2 - KeyAuditor & KeyServer to audit and measure their true software needs. Then they deployed copies of each software title to areas of confirmed need and began measuring demand. Some of their software agreements allowed them to temporarily install on more computers than they were licensed for and then "true-up" (reconcile) their licenses with the publisher at a latter date.

As they identified computers that did not use the software assets deployed to them, they reclaimed those assets and redeployed them to other computers.

### Microsoft Office 2004 Example.

- 250 computers
- Deployment requests 200+
- Only 160 computers touched it in over four months
- Purchased 160 licenses
- Set "Node-locked" licensing to 160
- Savings: \$4,500



*"As we continue to find ways to stretch our technology dollars, this is the package that is going to help the budget. I think it's a product that should be on everyone's school network."*

· Ken Tuley,  
Albuquerque Public Schools

**Sassafras Software**

www.sassafras.com

# K2 – KeyAuditor & KeyServer

*K2 is an integrated software asset management solution that enables IT managers to automatically audit, manage, and control their software and hardware assets. Sassafras first built KeyServer for Macintosh in 1989 and extended support to Windows in 1995. Presently, Sassafras is shipping a pre-release client agent for Linux.*

*In addition to comprehensive hardware/software auditing, K2 will also control access to licensed/unlicensed software and run detailed deployment and usage reports for an enterprise-level organization or for specific departments.*

## **New in Version 6.1:**

- K2 Web Reports: Scheduled Reports and Web Console
- Rules-based Filtering for Hands-free Management
- Role- and Scope-based Administration
- Enhanced Integration with Active Directory
- Rapid Client Deployment with ARD and other tools
- Universal Binary Support and Dashboard Widget

## **Supported Host & Clients:**

Macintosh, Windows, NetWare, Linux, BSD Unix.

## **Contacting us:**

Download Evaluation copy:  
<http://www.sassafras.com>

Technical support is free:  
[support@sassafras.com](mailto:support@sassafras.com)  
603-643-3351

Sales: Muriel Farrington  
[sales@sassafras.com](mailto:sales@sassafras.com)  
603-643-3351

Marketing: John Tomeny  
[johnt@sassafras.com](mailto:johnt@sassafras.com)

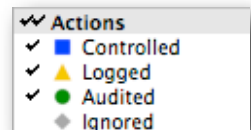
## **Computing Life-cycle Management Tasks:**

### **Asset Management**

- Complete software inventories: identifies tens-of-thousands of Macintosh and Windows software applications
- Hardware audits: OS details, computer configuration profiles, plus computer asset tag and location data
- Automatic, incremental delta audits and configurable reports
- Web-based and Console-based reporting
- Hundreds of standard built-in life-cycle management reports
- ODBC-compliant customizable external reports
- Report scheduling, Tiger Widget reporting tool, and RSS feeds
- Hosted process on Mac OS X, Windows, Linux, or NetWare

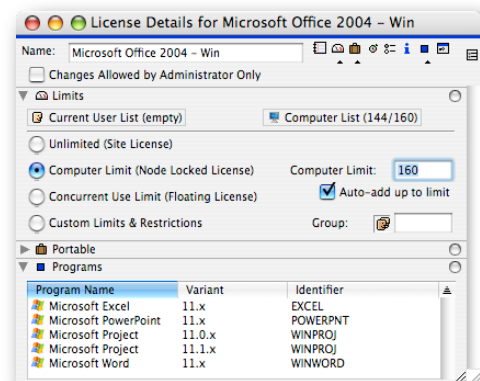
### **Usage Management**

- Support multiple user-groups and divisions of computers
- Settings to control, log, or ignore software usage are configurable for each software application
- Manage, or track usage for, different software versions discretely
- Managed and tracked applications are location independent – can be installed anywhere
- Deny access to unauthorized software or users
- Scheduled usage and reservations
- Software deployment & usage reports



### **License Management**

- Central deployment and management of software licenses
  - Unlimited site licenses
  - Single computer (node-locked) licenses
  - Concurrent use (floating) licenses
  - Custom limits & restrictions
- Multiple license profiles for each program
- Manage separate software versions
- Reclaim and redeploy abandoned software licenses
- Extensive License Compliance analysis & reports



### **Help Desk Management**

- Hardware audits: configuration and IT asset details
- Role- and Scope-based Administration
- Tiger Widget, Web reports & RSS report feeds

### **Integration with other IT Management Tools**

- Supports all major third-party authentication servers
- Extensible reporting with any ODBC-compliant reporting tools
- Integrated with upcoming OpenITAM project: <http://www.openitam.org/>